

THE 2020 ALDE VALLEY SPRING FESTIVAL

On a Turning Wing : A Celebration of Birds, Flight & Migration

THE SUMMER RESIDENCIES



Prunus Hokusai, 2020. Oil on board.

EMMA GREEN

THE 'CHERRY' INGRAM BLOSSOM RESIDENCY

WITH A FOREWORD BY NAOKO ABE

AUTHOR OF 'CHERRY' INGRAM, *THE ENGLISHMAN WHO SAVED JAPAN'S BLOSSOMS*

INTRODUCTION *by* JASON GATHORNE-HARDY

One of my early memories is from Doddington Hall in Lincolnshire – my mother’s childhood home. My Uncle Antony Jarvis gathered a group of us, all children, under the blossom-laden boughs of a thick-trunked veteran cherry tree. He then took hold of some lower branches and gave them a good prolonged shake. We all disappeared under a cascade of delicate fragrant petals. I remember the beautiful surprise of it : the soft coolness of the tumbling blossom on my face and the apparently endless waterfall of flowers. The memory stayed with me. Somehow it now feels symbolic of spring : of renewal and the recycling of life.

In moving to White House Farm and later creating the Alde Valley Spring Festival, I often felt that something was missing. For many years I tied bright pink, yellow and green ribbons to trees around the yards and to arches over gateways at the farm. The intention was to provide a sense of welcome and to brighten the landscape. But in reality, they were a substitute for flowering cherry trees with their fresh foliage and abundant pink blossom - a Suffolk *sakura*. In 2010/11 I sought the advice of Jon Rose at Botanica Plant Nursery and planted a small selection of flowering cherries at the farm, grouped around the farmhouse.

This in turn led me to a greater appreciation of the many cherry varieties that are available from nurseries – and to the extraordinary range of Japanese cherries. With help from Botanica, I started planting more trees around the fields including *Prunus Avium*, *P. Pink Perfection*, *P. Kanzan* and *P. Okame*. In the winter of 2018/2019, to support our 2018 Festival theme of *Florabundance*, I planted another 22+ flowering cherry and crab apple trees. I later bought in a further 8 potted specimen trees from Botanica. In the spring of 2019, these trees all became the subject of a *Hedge Hut Blossom Painting Residency* with Emma Green.

The remaining part of this story takes a twist. I had promised Emma that we would include the Blossom Paintings in the 2020 Spring Festival Exhibition – which was to be a celebration of birds, flight and migration. Initially, the connection between birds and the blossom paintings was to be a beautiful diptych by Emma, *Prunus Avium (Wild Cherry) II*, accompanied by a sound composition *Sakura avem* by musicians Dide Siemmond and Charly Jolly, working as the duo *Polymix*. But Jon Rose mentioned a cherry connection to Benenden in Kent – the home of my father’s family at the turn of the last century. This led me to the wonderful book ‘*Cherry*’ Ingram, *The Englishman Who Saved Japan’s Blossoms* by writer and journalist Naoko Abe. It is about the life of ornithologist and cherry saviour Collingwood ‘Cherry’ Ingram. The book describes how in the spring of 1920 two blossoming cherry trees in the garden of a house called the Grange in Benenden inspired in Ingram a lifelong passion for Japanese flowering cherries. He named these unidentified trees *Hokusai*. The house was built by my great, great grand- father – who may also have been responsible for planting the *Hokusai* cherry trees.

The rest, as they say, is history. Except that Naoko Abe’s beautiful book has allowed much more to happen. Fascinated by all these links, I placed a much larger order for cherry trees with Jon Rose in early 2020 to create the beginnings of a formal Collection at the farm; and then invited Emma Green back to paint the flowers for *The ‘Cherry’ Ingram Blossom Residency*, the subject of this Catalogue. And on 6th March 2020, to celebrate the centenary of ‘Cherry’ Ingram finding the original *Hokusai* trees in Benenden, Naoko Abe and her husband Paul joined descendants of Collingwood Ingram as Guests of Honour for a planting ceremony of *Okame*, *Hokusai* and *Kursar* cherry trees at the east end of the farm’s 200m oak picnic table.

Jason Gathorne-Hardy (Festival Curator). 4th June 2020. White House Farm, Great Glemham.

FOREWORD *by* NAOKO ABE



Prunus Taihaku IV, 2020

[Detail]

Oil on Board

H280mm

W810mm

Cherry blossoms are a harbinger of spring, offering a warm and welcome new dawn after the long winter.

In Japan, for more than 2,000 years, cherry blossoms have been symbols of life, peace, hope and inspiration. They also symbolise love, their delicate wispy petals connecting and bonding families and friends.

A few years ago, I was fortunate to discover an English gentleman, Collingwood Ingram (1880-1981), who had fallen in love with Japanese cherry blossoms at the beginning of the 20th century. He went to Japan three times and brought back many scions to plant in his garden in Benenden, Kent. He then spread them to every corner of the UK and beyond.

It seemed so unusual to me that Ingram could love cherry blossoms as much as, or more than, the Japanese. His achievements in creating and disseminating cherry varieties were incredible, but yet he was little known. So I was more than happy to give him the recognition he deserved in my first English book, *'Cherry' Ingram, The Englishman Who Saved Japan's Blossoms*, which was published in March 2019.

Ingram had a magnificent cherry collection at his home, The Grange. At its peak, it contained about 130 different varieties and was the largest in the world. Ingram also saved some of the most beautiful varieties, including the *Taihaku*, or great white cherry, which had gone extinct in Japan. *Taihaku* was safely returned to Japan by Ingram in 1932 and is now one of the most admired cherry varieties in the world.

It was equally surprising to me to discover that so many cherry trees -- more than 55 trees from over 15 varieties -- were blooming at White House Farm in Great Glemham, Suffolk. Jason Gathorne-Hardy is a cherry lover and a descendant of the first Earl of Cranbrook, who built Ingram's former residence, The Grange.

Amazingly, Ingram's 'love affair' with cherry blossoms was triggered in the spring of 1920 by the sight of two mature Japanese cherry trees at The Grange that the first Earl of Cranbrook most likely planted. Ingram later named the trees *Hokusai*.



Prunus Hokusai, 2020

Oil on Board
H150mm
W150mm

To celebrate this serendipitous connection and to mark the 100th anniversary of Ingram's encounter with the *Hokusai* trees at The Grange, a ceremony was held at White House Farm on 6th March this year. I was honoured to attend it with my husband Paul and two of Ingram's grandchildren. Together, we planted three more cherry varieties --- *Okame*, *Kursar* and *Hokusai*. The first two were Ingram's creations. It is heart-warming that cherry trees have reconnected the Ingram and the Gathorne-Hardy families through my book.

The blossoms in the Farm have now been painted by the talented artist Emma Green during her 'Cherry' Ingram Blossom Residency for the Alde Valley Spring Festival 2020. Emma worked from her own studio because of the Covid-19 pandemic, receiving images of the flowers from the Farm.

This new catalogue contains her second group of blossom paintings and includes the *Taihaku*, *Hokusai*, *Okame* and *Asano* varieties.



Prunus Matsumae Fuki,
2020

Oil on Board
H150mm
W150mm

Emma painted the remarkably large, pure white flowers of *Taihaku* with striking inner force. She injected vitality into the delicate petals of ‘*Okame*’, while her *Asano* exudes gracious but solid nobility. *Asano* is a variety that Ingram discovered deep in the mountains of central Japan on a cherry hunting trip in 1926. Another variety amongst her works, *Matsumae Fuki*, is a modern cultivar, which arrived in England in 1993 as a gift from Masatoshi Asari, a so-called ‘cherry guardian’ in Hokkaido, Japan.

Emma’s beautiful cherry-blossom paintings are a joy to behold, and they reflect Asari’s belief that *sakura* bring people together and spread peace and serenity throughout the world.

Naoko Abe. Journalist and writer, author of ‘*Cherry*’ Ingram, *The Englishman Who Saved Japan’s Blossoms* *

* ‘*Cherry*’ Ingram, *The Englishman Who Saved Japan’s Blossoms*

Published by Penguin Books, March 2019.
Hardback ISBN 9781784742027
Paperback ISBN 9781784706920



1. *Prunus Asano*

Oil on Board
H150mm W150mm

£395 (framed)



2. *Prunus Hokusia*

Oil on Board
H150mm W150mm

£395 (framed)



3. **SOLD** *Prunus Kanzan*

Oil on Board
H150mm W150mm

£395 (framed)



4. *Prunus Matsumae Fuki*

Oil on Board
H150mm W150mm

£395 (framed)



5. *Prunus Pink Shell*

Oil on Board
H150mm W150mm

£395 (framed)



6. *Prunus Shirofugen*

Oil on Board
H150mm W150mm

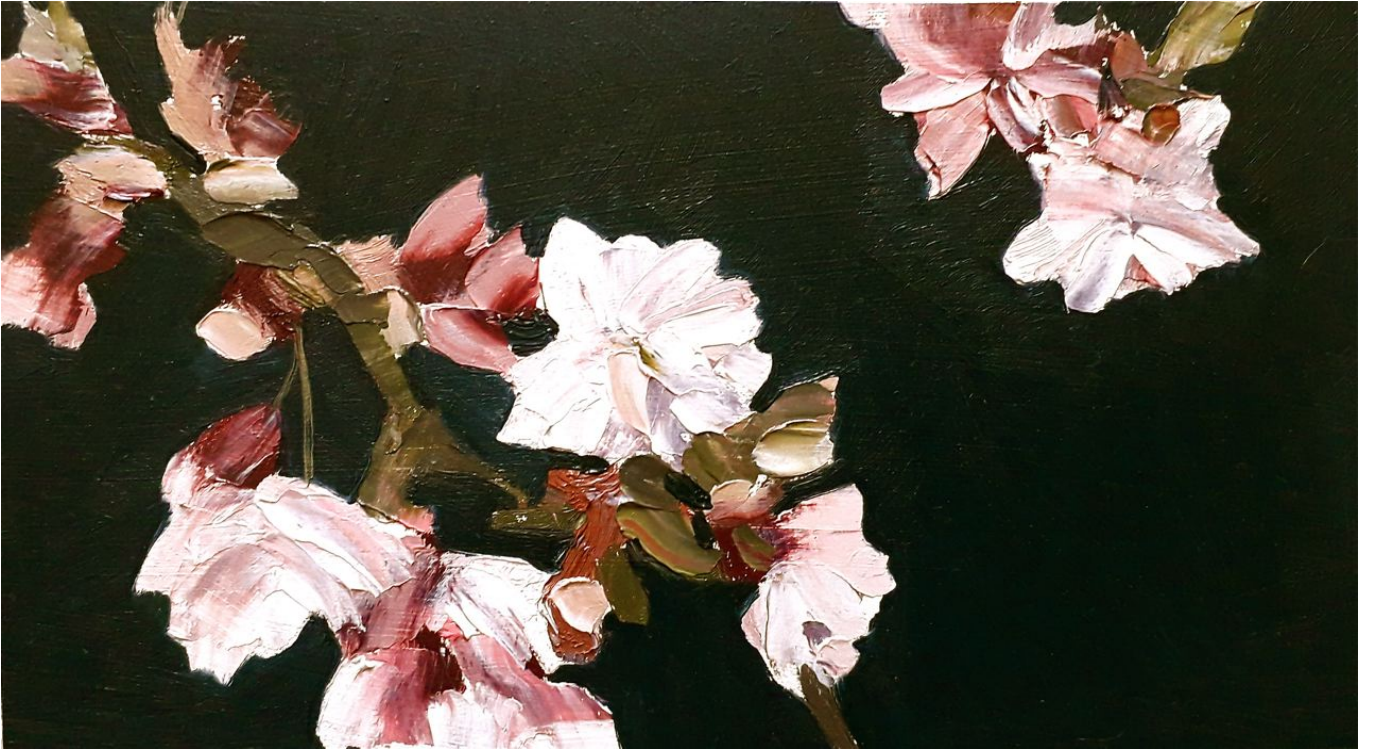
£395 (framed)



7. **SOLD** *Prunus St Botolph's*

Oil on Board
H150mm W150mm

£395 (framed)



8. *Prunus Chocolate Ice*

Oil on Board
H150mm W180mm

£250 (framed)



9. *Prunus Okame*, 2020

Oil On Board
H280mm W150mm

£425



10. *Prunus Royal Burgundy*

Oil On Board
H280mm W150mm:

£425



II. *Prunus Horinji*, 2020

Oil on Board
H180mm W250mm

£450



12. *Prunus 'At the Gate', 2020*

Oil on Board

H1100mm W400mm

£495



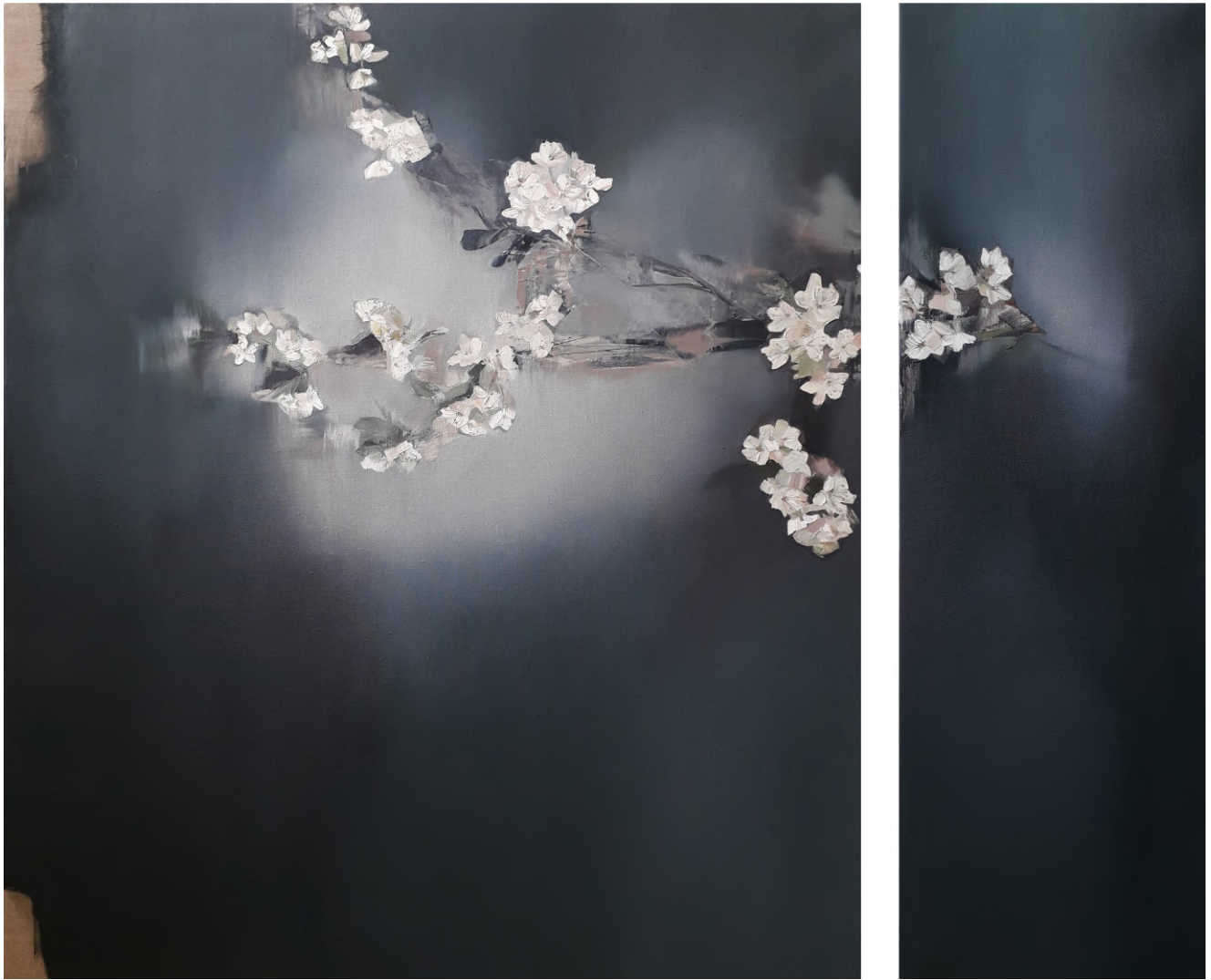
13. *Prunus Taihaku IV*, 2020

[Detail to right]

Oil on Board
H280mm W810mm

£995





14. **SOLD** *Prunus Avium (Wild Cherry) II, 2020*

Oil On Linen Diptych

Left Panel H960mm x W810mm

Right Panel H960mm x W300mm

£1,995 (unframed)

NOTE

The painting *Prunus Avium' (Wild Cherry)II, 2020* is being launched with a specially commissioned sound composition *Sakura avem* composed and performed by Dide Siemmond (*Movement 1*) and Charly Jolly (*Movement 2*) working as the duo *Polymix*. Mixing by sound engineer Tom Taylor. See below for more information.

This new composition is available to listen to on the Alde Valley Spring Festival's website on the Exhibition page below an image of *Prunus Avium' (Wild Cherry) II, 2020*. We are also exploring the release of a signed Limited Edition CD recording of *Sakura avem* with artwork by Emma Green. If you are interested in a copy, please contact the Festival Office: enquiries@aldevalleyspringfestival.co.uk .

For all sales enquiries / more information : enquiries@aldevalleyspringfestival.co.uk

THE 'CHERRY' INGRAM BLOSSOM RESIDENCY SOUND INSTALLATION

A NEW COMPOSITION : *Sakura avem* to accompany *Prunus Avium*' (Wild Cherry) II, 2020

INTRODUCTION *by* EMMA GREEN

"I'd wanted to explore sound and painting again, after my first installation featuring a Nightingale recording alongside a large oil on linen at the Alde Valley Spring Festival in 2015. I'd had the idea about incorporating instruments into a composition along with the recordings for some time. The Hedge Hut Residency and blossom paintings seemed the perfect subject with which to explore the idea. The sound installation to accompany the large oil painting Prunus Avium' (Wild Cherry) II, 2020 from the Residency, was created with the writer and composer Dide Siemmond and the musician Charly Jolly. I already knew of Dide Siemmond's work as an artist, writer and musician and it then seemed serendipitous to meet the talented clarinetist, Charly Jolly - and the sound project has flowed from there."

Emma Green. March 2020

COMPOSERS' STATEMENTS

"The recordings were taken by Emma Green on her 2019-2020 Hedge Hut Residency at the farm and edited by Tom Taylor. The music incorporates these recordings, with the instruments mimicking the sounds of birdsong amongst other natural sounds, as well as harmonically respond to the small collection of blossom paintings that Emma predominantly painted on site at the farm, en plein air. The music does this by keeping a tonal language that is closer to the colour palette of the paintings, and by basing some of it on a modified Japanese mode."

This works particularly well, bearing in mind that the blossom paintings are largely either of the ornamental cherry blossoms introduced to the farm, or of the wild cherry 'Prunus avium', which grows on the woodland edge there and provides essential early nectar for insects and birds — both with strong links to Japan."

Dide Siemmond. May 2020.

NOTES about THE COMPOSERS / MUSICIANS

CHARLY JOLLY is a multi-instrumentalist, singer and composer who likes to co-create music. Deeply rooted in classical music, her collaborations often start life through improvisation drawing on influences from folk, jazz and popular music. She is a member of the harp and clarinet improvisation duo *Folie a deux Femmes*, the Italian swing band *Hetty and the Jazzato Band* and saxophonist with art punk rock collective *Perhaps Contraption*. She also creates intimate improvisation-based musical experiences for children in their early years.

DIDE SIEMMOND is an award-winning multi-disciplinary composer / musician / opera singer / writer and artist. She's interested in playing with genres for deeper causes, for instance, her solo music and visual art show *'Grey matters, for THOUGHT'* for Mind Charity. She has invented a new method of composing music, currently titled *'Sound Scripts'*; and also

often merges classical instrumentation with natural environmental recordings in her compositions. Some are included in the New Museum of Networked Art's '*Wake up! Climate Change!*'. She has composed for London Ballet School students, London Contemporary School of Dance students, Philharmonia Orchestra's digital composition course, and the relaunch of the Brambly Hedge children books series. She studied violin with Jascha Heifetz's protégé Pierre Amoyal and is currently studying opera with the world-renowned Yvonne Kenny. She holds an Arts Territory Exchange Award amongst others.

POLY MIX. Charly Jolly from the band *Perhaps Contraption* and other groups has collaborated with multi-disciplinary composer / musician / singer / writer and artist Dide Siemmond as *Polymix* to co-compose and perform *Sakura avem* - a piece of music for clarinet and violin respectively, alongside birdsong recorded from White House Farm.

End of The 'Cherry' Ingram Blossom Residency Catalogue

For all sales or for more information about any works

Please contact : enquiries@aldevalleyspringfestival.co.uk

Website : www.aldevalleyspringfestival.co.uk **Instagram :** [@aldevalleyfestival](https://www.instagram.com/aldevalleyfestival)